

Series **AXM**

Mixed flow In-line duct fans

AXM is a series of compact in-line duct fans entirely made of robust and highly-resistant polypropylene. They are particularly indicated for installations where space is limited, such as false ceilings. Highly versatile, they can offer the most effective solution for a wide range of residential or commercial ventilation applications.

AXM fans are available in 5 models with sizes Ø100, 125, 150, 160 and 200 mm. They are 2 speed running as standard and available with timer (adjustable from 3 to 15 minutes).

BENEFITS

- High efficiency resulting in minimum energy costs.
- Quiet running thanks to optimized aerodynamics and guide vanes.
- Easy installation: pre-installed mounting brackets and external connection box.
- Simplified maintenance by loosening the clamps (no need to handle the duct).
- Versatile installation.

Features

- Duct fans, made entirely of polypropylene.
- For direct installation between ducts.
- Easy inspection and maintenance by simply opening the clamp and removing the fan.
- Helicocentrifugal mixed flow impeller with downstream stator. Made in ABS.

Motor

- Asynchronous motor, 2 and 3 speeds, depending on model.
- IP 44 Protection, Motor Class B.
- Robust motor with ball bearings, maintenance-free.
- 220 - 240 at 50 Hz.
- Speed control using phase control or transformer (exception: Version with timer).
- Thermal overload protection as a standard feature.

Electrical connection

- Externally fitted terminal box with cable entry grommet.

Accessories

- Speed controllers
- Back-draught shutter
- Protection grille



AXM 100

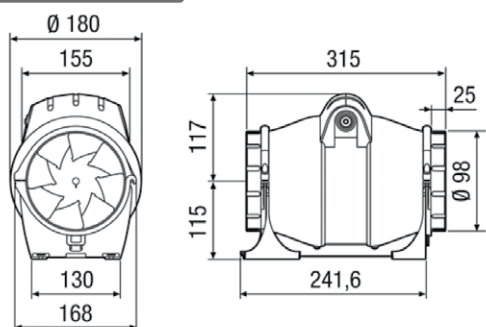


VERSION



TIMER, adjustable from 3 to 15 minutes.

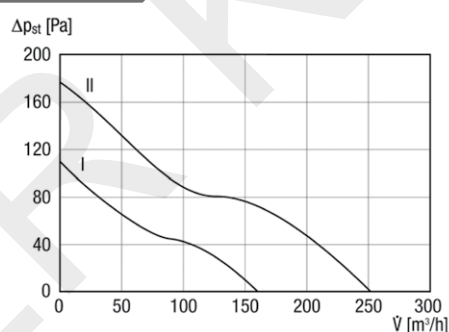
DIMENSIONS (mm)



TECHNICAL DATA

Air flow volume	160 m ³ /h/250 m ³ /h
Rotating speed	1,700 1/min/2,300 1/min
Speed controllable	✓
Rated voltage	220 - 240 V
Frequency	50 Hz
Nominal output max	35 W
I _{max}	0.1 A/0.18 A
Degree of protection (IP)	44
Insulation class	B
Installation site	Duct
Installation position	vertical, horizontal
Housing material	Polypropylene
Weight	2,1 kg
Nominal size	100 mm
Airstream temperature max	40 °C
Range	C
Tot LwA	55 dB(A)
Tot LpA at 3 m	39 dB(A)

CURVES



AXM 125

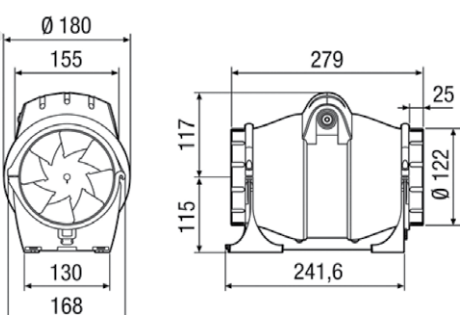


VERSION



TIMER, adjustable from 3 to 15 minutes.

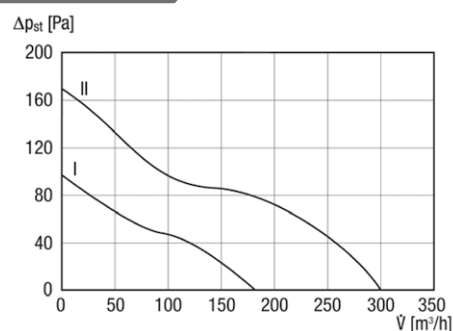
DIMENSIONS (mm)



TECHNICAL DATA

Air flow volume	180 m ³ /h/300 m ³ /h
Rotating speed	1,700 1/min/2,300 1/min
Speed controllable	✓
Rated voltage	220 - 240 V
Frequency	50 Hz
Nominal output max	36 W
I _{max}	0.1 A/0.18 A
Degree of protection (IP)	44
Insulation class	B
Installation site	Duct
Installation position	vertical, horizontal
Housing material	Polypropylene
Weight	2,1 kg
Nominal size	125 mm
Airstream temperature max	40 °C
Range	C
Tot LwA	54 dB(A)
Tot LpA at 3 m	44 dB(A)

CURVES



AXM 150

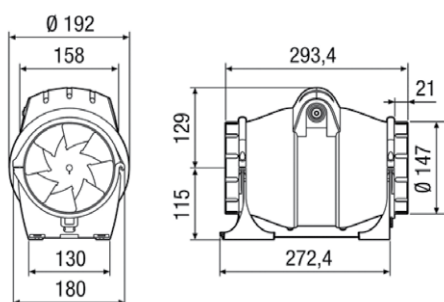


VERSION



TIMER, adjustable from 3 to 15 minutes.

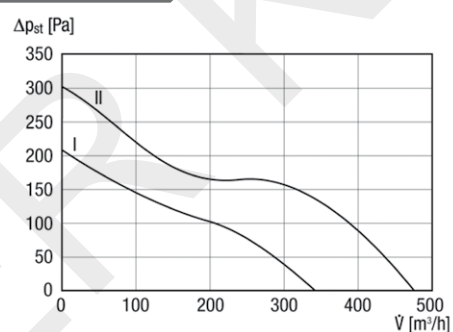
DIMENSIONS (mm)



TECHNICAL DATA

Air flow volume	340 m³/h/480 m³/h
Rotating speed	2,000 1/min/2,700 1/min
Speed controllable	✓
Rated voltage	220 - 240 V
Frequency	50 Hz
Nominal output max	70 W
I _{max}	0.27 A/0.36 A
Degree of protection (IP)	44
Insulation class	B
Installation site	Duct
Installation position	vertical, horizontal
Housing material	Polypropylene
Weight	3,2 kg
Nominal size	150 mm
Airstream temperature max	40 °C
Range	C
Tot LwA	66 dB(A)
Tot LpA at 3 m	50 dB(A)

CURVES



AXM 160

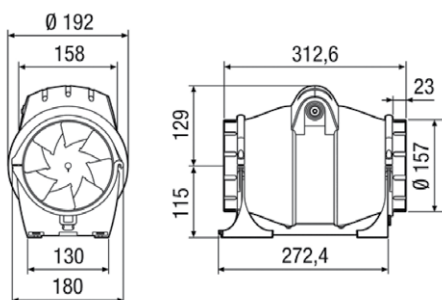


VERSION



TIMER, adjustable from 3 to 15 minutes.

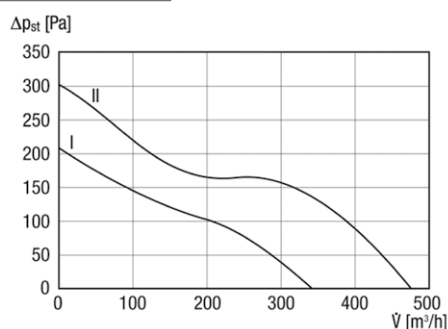
DIMENSIONS (mm)



TECHNICAL DATA

Air flow volume	340 m³/h/480 m³/h
Rotating speed	2,000 1/min/2,700 1/min
Speed controllable	✓
Rated voltage	220 - 240 V
Frequency	50 Hz
Nominal output max	70 W
I _{max}	0.27 A/0.36 A
Degree of protection (IP)	44
Insulation class	B
Installation site	Duct
Installation position	vertical, horizontal
Housing material	Polypropylene
Weight	3,2 kg
Nominal size	160 mm
Airstream temperature max	40 °C
Range	C
Tot LwA	65 dB(A)
Tot LpA at 3 m	50 dB(A)

CURVES



AXM 200



3 speeds as standard.
2 speeds Timer version.

VERSION

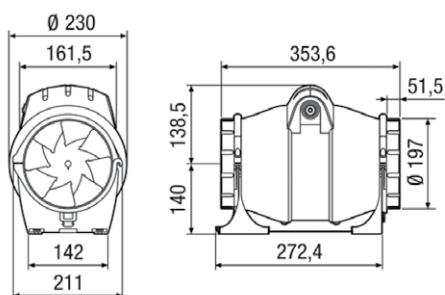


TIMER, adjustable from 3 to 15 minutes.

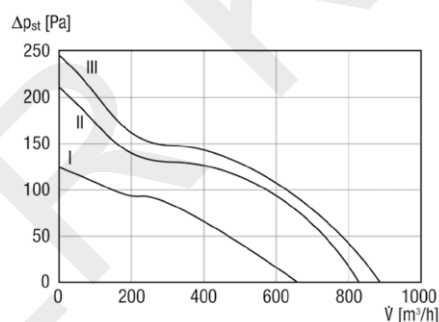
TECHNICAL DATA

Air flow volume	720 m ³ /h/820 m ³ /h/910 m ³ /h
Rotating speed	1,800 1/min/2,000 1/min/2,700 1/min
Speed controllable	✓
Rated voltage	220 - 240 V
Frequency	50 Hz
Nominal output max	75 W
I _{max}	0.24 A/0.27 A/0.34 A
Degree of protection (IP)	44
Insulation class	B
Installation site	Duct
Installation position	vertical, horizontal
Housing material	Polypropylene
Weight	4,5 kg
Nominal size	200 mm
Airstream temperature max	40 °C
Range	C
Tot LwA	58 dB(A)
Tot LpA at 3 m	43 dB(A)

DIMENSIONS (mm)



CURVES



SPEED CONTROLLERS

ACCESSORIES



R10

Cod. 2RV4110

- Infinitely variable electronic speed controller by potentiometer
- New design with cover
- **Suitable for surface and built-in application**
- Ease of connection by the means of removable terminals
- External trimmer for the adjustment of the fan minimum speed
- Protection fuse
- Preset holes for surface and recessed cable entry
- Single-phase 230V – 50 Hz
- **Max. load 1A**
- Protection IP42
- Weight 0,5 Kg
- Dimensions 110x80x42



RS

Cod. 2RV4151

- **4 steps speed controller** fitted with transformer
- New design with cover
- **Suitable for surface or built-in installation**
- Ease of connection by the means of removable terminals
- Running led On/Off
- Supply voltage 230V – 50/60 Hz
- Provided with protection fuse
- **Max. load 0,37 A**
- Protection IPX2
- Weight 0,54 Kg
- Dimensions 138 x 80 x 56



RVS

Cod. 2RV4042

- **5 steps speed controller** (fitted with transformer)
- ON/OFF switch
- IP42 protection
- **Max. load: 100 W (0,5 A)**
- Supply voltage: 230V-50/60 Hz
- Sizes: 118 x 118 x 58 mm
- Weight: 0,7 kg