

## VENTS Lumis Series



Exhaust axial fan  
with integrated light source.  
Air capacity  
up to 115 m<sup>3</sup>/h

### Applications

- Continuous or periodic exhaust ventilation of bathroom, showers, kitchens and other utility spaces.
- Ventilation shaft mounting or duct connection.
- Low to medium air flow motion for short distances at low air resistance.
- Compatible with 100 mm air ducts.

### Design

- Modern design and aesthetic look.
- The casing and the impeller are made of high-quality durable ABS plastic, UV resistant.
- The impeller design enhances the fan efficiency and prolongs the motor service life.
- The 10 watt LED backlight lamp is integrated in the casing with a working life of 40 000 hours.
- The lamp colour temperature is 3000 K (warm light).
- Protection rating IP 24

### Motor

- Reliable motor with low energy demand.
- Designed for continuous operation and requires no maintenance.
- Equipped with overheating protection.

### Modifications and options



**Lumis 100 K** – the fan is equipped with a back valve to prevent air back drafting.



**Lumis 100 L** – the motor is equipped with ball bearings for long service life (appr. 40 thousand hours) and fan mounting at any angle. The bearings are maintenance-free and contain enough grease for the entire operating period.



**Lumis 100 turbo** – high-powered motor.

### Control

#### Manual:

- The fan is controlled with a room light switch (not included in the delivery).
- Speed control with a thyristor speed controller, refer to the Electric accessories. Several fans may be connected to one controller.

#### Automatic:

- Speed control with a an electronic control unit BU-1-60, refer to the Electric accessories. The control unit is available upon separate order.

### Mounting features

- The fan is mounted directly into the ventilation shaft.
- Flexible duct connection is recommended in case of the remote ventilation shaft location. The air duct is connected to the fan exhaust flange through a clamp.
- Mounting to wall with screws.
- Suitable for ceiling mounting.

### Accessories

Air ducts



Grilles and hoods



Back valves



Speed controllers



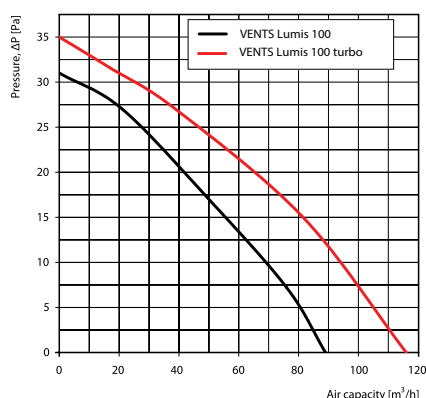
Control unit



Clamps



## Aerodynamic characteristics



## Technical data

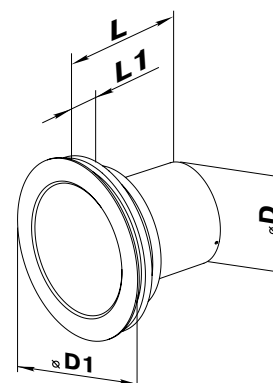
Model	Voltage [V] at 50 Hz	Power Consumption [W]	Current [A]	r.p.m.	Maximum air capacity [m³/h]	Sound Pressure Level at 3 m [dB(A)]	Weight [kg]
VENTS Lumis 100	220-240	24	0,135	410	92	33	0,79
VENTS Lumis 100 turbo	220-240	26	0,15	2400	115	37	0,87

## Mounting example



## Overall dimensions

Model	Dimensions [mm]			
	Ø D1	Ø D	L	L1
VENTS Lumis 100	178	99,4	133,5	46
VENTS Lumis 100 turbo	178	99,4	133,5	46



## Certificates



The fans meet the applicable safety and electromagnetic compatibility standards.